

Product datasheet

Specifications



Metal Mount Base for XVC6

Local distributor code:
403036176 XVCZ02

EAN Code: 3606480032745

Main

Range Of Product	Harmony XVC6
Accessory / Separate Part Designation	Metal fixing plate
Accessory / Separate Part Type	Fixing plate
Product Or Component Type	Fixing plate
Accessory / Separate Part Category	Mounting and fixing accessories
Product Compatibility	XVC6B4 XVC6B1 XVC6B3 XVC6B55S XVC6B35S XVC6B5 XVC6B2 XVC6B45S XVC6B25S XVC6B15S
Accessory / Separate Part Destination	Complete pre-wired monolithic tower light
Product Specific Application	For support tube mounting

Complementary

Diameter	100 mm
Height	30 mm
Net Weight	0.08 kg

Packing Units

Unit Type Of Package 1	PCE
Number Of Units In Package 1	1
Package 1 Height	8.4 cm
Package 1 Width	11.4 cm
Package 1 Length	11.4 cm
Package 1 Weight	196 g
Unit Type Of Package 2	S02
Number Of Units In Package 2	8
Package 2 Height	15 cm
Package 2 Width	30 cm
Package 2 Length	40 cm
Package 2 Weight	2.101 kg

Disclaimer: This documentation is not intended as a substitute for and is not to be used for determining suitability or reliability of these products for specific user applications

Contractual warranty

Warranty	18 months
----------	-----------

Sustainability

Green Premium™ label is Schneider Electric's commitment to delivering products with best-in-class environmental performance. Green Premium promises compliance with the latest regulations, transparency on environmental impacts, as well as circular and low-CO₂ products.

Guide to assessing product sustainability is a white paper that clarifies global eco-label standards and how to interpret environmental declarations.

[Learn more about Green Premium >](#)

[Guide to assess a product's sustainability >](#)



Transparency

Well-being performance

✓ Toxic Heavy Metal Free

✓ Mercury Free

✓ Rohs Exemption Information Yes

Eu Rohs Directive	Pro-active compliance (Product out of EU RoHS legal scope) EU RoHS Declaration
-------------------	---

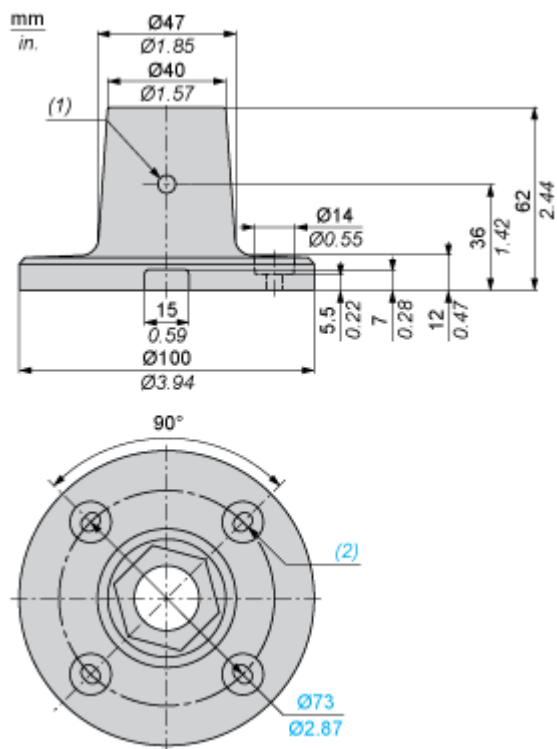
China Rohs Regulation	China RoHS declaration Pro-active China RoHS declaration (out of China RoHS legal scope)
-----------------------	---

Environmental Disclosure	Product Environmental Profile
--------------------------	---

Circularity Profile	End of Life Information
---------------------	---

Dimensions Drawings

Dimensions and Mounting



- (1) M6 (SUS)
- (2) 4 elongated holes $\varnothing 5.2\text{mm} \times 7\text{mm}$ / $\varnothing 0.20\text{ in/ } 0.28\text{ in.}$