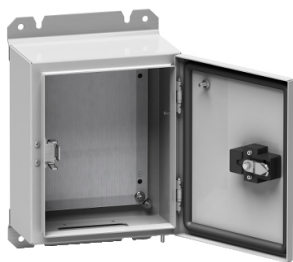


Product datasheet

Specifications



Spacial S3D seismic plain door with mount.plate - H700xW500xD250 - IP65 - IK10

Local distributor code:
402657844

NSYS3D6G7525P

⚠ Discontinued on: 9 Feb 2023

⚠ Discontinued

EAN Code: 3606480793974

Main

Range	Spacial
Product Name	S3D 6G
Enclosure Application	Seismic
Product Or Component Type	Enclosure
Enclosure Nominal Height	700 mm
Enclosure Nominal Width	500 mm
Enclosure Nominal Depth	250 mm
Door Type	Plain
Mounting Plate Description	Reinforce
Enclosure Mounting	Wall mounted
Device Composition	1 x body 1 x door 1 x lock 2 x fixing bracket 1 x mounting plate 1 x earthing components door and lock 1 x cable gland plate
Continuity Of Earth	Earthing connection between body and door

Complementary

Body Type	Single piece body Gutter-shaped front rail
Number Of Doors	Front face: 1 door(s)
Door Opening Side	Right (120 °)
Lock Type	3-point closure
Type Of Keylock	EDF 1600
Type Of Operating Handle	Swing handle
Accessibility For Operation	Front
Removable Parts	Cable gland plate by screws
Material	Steel
Thickness	Body: 2 mm Door: 2 mm Cable gland plate: 1.5 mm
Surface Finish	Epoxy-polyester powder
Colour	Grey (RAL 7035)

Disclaimer: This documentation is not intended as a substitute for and is not to be used for determining suitability or reliability of these products for specific user applications

Net Weight	33 kg
------------	-------

Environment

Surface Treatment	87 % decontaminable painting conforming to NF T 30-501.
Standards	IEC 62208 EDF CRT 91 C 112 00
Ip Degree Of Protection	IP65 conforming to IEC 60529
Ik Degree Of Protection	IK10 conforming to IEC 62262
Seismic Performance	Seismic tests 6G conforming to EDF CRT 91 C 112 00

Packing Units

Unit Type Of Package 1	PCE
Number Of Units In Package 1	1
Package 1 Height	31.0 cm
Package 1 Width	53.0 cm
Package 1 Length	79.0 cm
Package 1 Weight	33.0 kg
Unit Type Of Package 2	PAM
Number Of Units In Package 2	5
Package 2 Height	98.0 cm
Package 2 Width	100.0 cm
Package 2 Length	120.0 cm
Package 2 Weight	182.0 kg

Contractual warranty

Warranty	18 months
----------	-----------

Sustainability



Green Premium™ label is Schneider Electric’s commitment to delivering products with best-in-class environmental performance. Green Premium promises compliance with the latest regulations, transparency on environmental impacts, as well as circular and low-CO₂ products.

Guide to assessing product sustainability is a white paper that clarifies global eco-label standards and how to interpret environmental declarations.

[Learn more about Green Premium >](#)

[Guide to assess a product’s sustainability >](#)

Well-being performance

 Mercury Free	
 Rohs Exemption Information	Yes
Reach Regulation	REACH Declaration
Eu Rohs Directive	Pro-active compliance (Product out of EU RoHS legal scope)
China Rohs Regulation	China RoHS declaration Product out of China RoHS scope. Substance declaration for your information