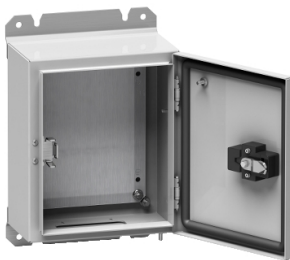


Product datasheet

Specifications



Spacial S3D seismic plain door with mount.plate - H600xW500xD250 - IP65 - IK10

Local distributor code:
402657831

NSYS3D6G6525P

⚠ Discontinued on: 15 Jun 2023

⚠ Discontinued

EAN Code: 3606480793967

Main

Range	Spacial
Product Name	S3D 6G
Enclosure Application	Seismic
Product Or Component Type	Enclosure
Enclosure Nominal Height	600 mm
Enclosure Nominal Width	500 mm
Enclosure Nominal Depth	250 mm
Door Type	Plain
Mounting Plate Description	Reinforce
Enclosure Mounting	Wall mounted
Device Composition	1 x body 1 x door 1 x lock 2 x fixing bracket 1 x mounting plate 1 x earthing components door and lock 1 x cable gland plate
Continuity Of Earth	Earthing connection between body and door

Complementary

Body Type	Single piece body Gutter-shaped front rail
Number Of Doors	Front face: 1 door(s)
Door Opening Side	Right (120 °)
Lock Type	1-point closure
Type Of Keylock	EDF 1600
Type Of Operating Handle	Lock button
Accessibility For Operation	Front
Removable Parts	Cable gland plate by screws
Material	Steel
Thickness	Body: 2 mm Door: 2 mm Cable gland plate: 1.5 mm
Surface Finish	Epoxy-polyester powder
Colour	Grey (RAL 7035)

Disclaimer: This documentation is not intended as a substitute for and is not to be used for determining suitability or reliability of these products for specific user applications

Net Weight	29 kg
------------	-------

Environment

Surface Treatment	87 % decontaminable painting conforming to NF T 30-501.
Standards	IEC 62208 EDF CRT 91 C 112 00
Ip Degree Of Protection	IP65 conforming to IEC 60529
Ik Degree Of Protection	IK10 conforming to IEC 62262
Seismic Performance	Seismic tests 6G conforming to EDF CRT 91 C 112 00

Packing Units

Unit Type Of Package 1	PCE
Number Of Units In Package 1	1
Package 1 Height	31.0 cm
Package 1 Width	53.0 cm
Package 1 Length	69.0 cm
Package 1 Weight	29.0 kg
Unit Type Of Package 2	P12
Number Of Units In Package 2	6
Package 2 Height	130.0 cm
Package 2 Width	80.0 cm
Package 2 Length	120.0 cm
Package 2 Weight	192.4 kg

Contractual warranty

Warranty	18 months
----------	-----------

Sustainability



Green Premium™ label is Schneider Electric’s commitment to delivering products with best-in-class environmental performance. Green Premium promises compliance with the latest regulations, transparency on environmental impacts, as well as circular and low-CO₂ products.

Guide to assessing product sustainability is a white paper that clarifies global eco-label standards and how to interpret environmental declarations.

[Learn more about Green Premium >](#)

[Guide to assess a product’s sustainability >](#)

Well-being performance

	Mercury Free	
	Rohs Exemption Information	Yes
Eu Rohs Directive	Pro-active compliance (Product out of EU RoHS legal scope)	EU RoHS Declaration
China Rohs Regulation	China RoHS declaration	Product out of China RoHS scope. Substance declaration for your information