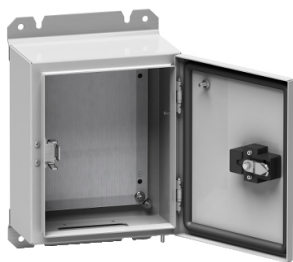


# Product datasheet

Specifications



## Spacial S3D seismic plain door with mount.plate - H300xW250xD150 - IP65 - IK10

Local distributor code:  
402657873

NSYS3D6G32515P

⚠ Discontinued on: 9 Feb 2023

⚠ Discontinued

EAN Code: 3606480793943

### Main

Range	Spacial
Product Name	S3D 6G
Enclosure Application	Seismic
Product Or Component Type	Enclosure
Enclosure Nominal Height	300 mm
Enclosure Nominal Width	250 mm
Enclosure Nominal Depth	150 mm
Door Type	Plain
Mounting Plate Description	Reinforce
Enclosure Mounting	Wall mounted
Device Composition	1 x body 1 x door 1 x lock 2 x fixing bracket 1 x mounting plate 1 x earthing components door and lock 1 x cable gland plate
Continuity Of Earth	Earthing connection between body and door

### Complementary

Body Type	Single piece body Gutter-shaped front rail
Number Of Doors	Front face: 1 door(s)
Door Opening Side	Right (120 °)
Lock Type	1-point closure
Type Of Keylock	EDF 1600
Type Of Operating Handle	Lock button
Accessibility For Operation	Front
Removable Parts	Cable gland plate by screws
Material	Steel
Thickness	Body: 2 mm Door: 2 mm Cable gland plate: 1.5 mm
Surface Finish	Epoxy-polyester powder
Colour	Grey (RAL 7035)

Disclaimer: This documentation is not intended as a substitute for and is not to be used for determining suitability or reliability of these products for specific user applications

Net Weight	9 kg
------------	------

## Environment

Surface Treatment	87 % decontaminable painting conforming to NF T 30-501.
Standards	IEC 62208 EDF CRT 91 C 112 00
Ip Degree Of Protection	IP65 conforming to IEC 60529
Ik Degree Of Protection	IK10 conforming to IEC 62262
Seismic Performance	Seismic tests 6G conforming to EDF CRT 91 C 112 00

## Packing Units

Unit Type Of Package 1	PCE
Number Of Units In Package 1	1
Package 1 Height	39.0 cm
Package 1 Width	21.0 cm
Package 1 Length	28.0 cm
Package 1 Weight	9.0 kg

## Contractual warranty

Warranty	18 months
----------	-----------

# Sustainability



**Green Premium™ label** is Schneider Electric’s commitment to delivering products with best-in-class environmental performance. Green Premium promises compliance with the latest regulations, transparency on environmental impacts, as well as circular and low-CO<sub>2</sub> products.

**Guide to assessing product sustainability** is a white paper that clarifies global eco-label standards and how to interpret environmental declarations.

[Learn more about Green Premium >](#)

[Guide to assess a product’s sustainability >](#)

## Well-being performance

 Mercury Free	
 Rohs Exemption Information	<a href="#">Yes</a>
Reach Regulation	<a href="#">REACH Declaration</a>
Eu Rohs Directive	Pro-active compliance (Product out of EU RoHS legal scope)
China Rohs Regulation	<a href="#">China RoHS declaration</a> Product out of China RoHS scope. Substance declaration for your information