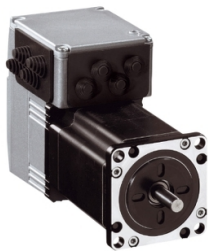


Product datasheet

Specifications



integrated drive ILS with stepper motor - 24..48 V - EtherCAT - 3.5 A

ILS2E571PB1A0

Discontinued on: 9 Feb 2023

Discontinued

EAN Code: 3606485189390

Main

| | |
|---------------------------|--|
| Range Of Product | Lexium integrated drive |
| Product Or Component Type | Motion integrated drive |
| Device Short Name | ILS |
| Motor Type | 3-phase stepper motor |
| Number Of Motor Poles | 6 |
| Network Number Of Phases | Single phase |
| [Us] Rated Supply Voltage | 48 V 24 V |
| Network Type | DC |
| Communication Interface | EtherCAT, integrated |
| Length | 101.9 mm |
| Winding Type | Medium speed of rotation and medium torque |
| Electrical Connection | Printed circuit board connector |
| Holding Brake | Without |
| Gear Box Type | Without |
| Nominal Speed | 1000 rpm at 24 V 2000 rpm at 48 V |
| Nominal Torque | 0.45 N.m |
| Holding Torque | 0.45 N.m |

Complementary

| | |
|---------------------------------------|-------------|
| Transmission Rate | 100 Mbits |
| Mounting Support | Flange |
| Motor Flange Size | 57 mm |
| Number Of Motor Stacks | 1 |
| Centring Collar Diameter | 38.1 mm |
| Centring Collar Depth | 1.6 mm |
| Number Of Mounting Holes | 4 |
| Mounting Holes Diameter | 5.2 mm |
| Circle Diameter Of The Mounting Holes | 66.6 mm |
| Feedback Type | Index pulse |

Disclaimer: This documentation is not intended as a substitute for and is not to be used for determining suitability or reliability of these products for specific user applications

| | |
|----------------------------|--|
| Shaft End | Untapped |
| Second Shaft | Without second shaft end |
| Shaft Diameter | 6.35 mm |
| Shaft Length | 21 mm |
| Supply Voltage Limits | 18...55 V |
| Current Consumption | 3500 mA maximum continuous |
| Associated Fuse Rating | 16 A |
| Commissioning Interface | RS485 Modbus TCP (9.6, 19.2 and 38.4 kbauds) |
| Input/Output Type | 4 signals (each be used as input or output) |
| Voltage State 0 Guaranteed | -3...4.5 V |
| Voltage State 1 Guaranteed | 15...30 V |
| Discrete Input Current | 10 mA at 24 V for safety input 2 mA at 24 V for 24 V signal interface |
| Discrete Output Voltage | 23...25 V |
| Maximum Switching Current | 100 mA per output 200 mA total |
| Protection Type | Short circuit of the output voltage Safe torque off Overload of output voltage |
| Peak Stall Torque | 0.45 N.m |
| Continuous Stall Torque | 0.45 N.m |
| Speed Feedback Resolution | 20000 points/turn |
| Accuracy Error | +/- 6 arc min |
| Rotor Inertia | 0.1 kg.cm ² |
| Maximum Mechanical Speed | 3000 rpm |
| Maximum Radial Force Fr | 24 N |
| Maximum Axial Force Fa | 100 N (tensile force) 8.4 N (force pressure) |
| Service Life In Hours | 20000 h bearing |
| Marking | CE |
| Type Of Cooling | Natural convection |
| Net Weight | 1.3 kg |

Environment

| | |
|---|---|
| Standards | EN/IEC 50178 EN/IEC 61800-3 EN 61800-3:2001, second environment IEC 61800-3, Ed 2 EN 50347 IEC 60072-1 EN 61800-3 : 2001-02 |
| Product Certifications | cUL TÜV UL |
| Ambient Air Temperature For Operation | 40...55 °C (with power derating of 2 % per °C) 0...40 °C (without derating) |
| Permissible Ambient Air Temperature Around The Device | 105 °C power amplifier 110 °C motor |

| | |
|-------------------------------------|---|
| Ambient Air Temperature For Storage | -25...70 °C |
| Operating Altitude | <= 1000 m without derating |
| Relative Humidity | 15...85 % without condensation |
| Vibration Resistance | 20 m/s² (f= 10...500 Hz) 10 cycles conforming to EN/IEC 60068-2-6 |
| Shock Resistance | 150 m/s² 1000 shocks conforming to EN/IEC 60068-2-29 |
| Ip Degree Of Protection | IP41 shaft bushing: conforming to EN/IEC 60034-5 IP54 total except shaft bushing: conforming to EN/IEC 60034-5 |

Packing Units

| | |
|------------------------------|---------|
| Unit Type Of Package 1 | PCE |
| Number Of Units In Package 1 | 1 |
| Package 1 Height | 8.0 cm |
| Package 1 Width | 18.5 cm |
| Package 1 Length | 35.5 cm |
| Package 1 Weight | 1.6 kg |

Contractual warranty

| | |
|----------|-----------|
| Warranty | 18 months |
|----------|-----------|

Sustainability



Green Premium™ label is Schneider Electric’s commitment to delivering products with best-in-class environmental performance. Green Premium promises compliance with the latest regulations, transparency on environmental impacts, as well as circular and low-CO₂ products.

Guide to assessing product sustainability is a white paper that clarifies global eco-label standards and how to interpret environmental declarations.

[Learn more about Green Premium >](#)

[Guide to assess a product’s sustainability >](#)



Transparency RoHS/REACH

Well-being performance

| | |
|--|----------------|
| <div><div>✓</div><div>Mercury Free</div></div> | |
| <div><div>✓</div><div>Rohs Exemption Information</div></div> | <div>Yes</div> |
| <div><div>✓</div><div>Pvc Free</div></div> | |

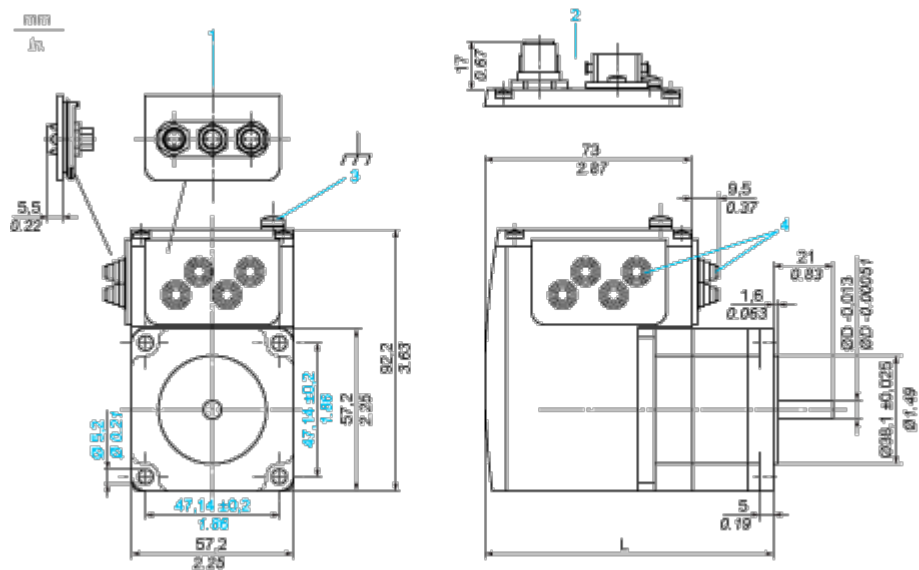
Certifications & Standards

| | |
|--------------------------|--|
| Reach Regulation | <div>REACH Declaration</div> |
| Eu Rohs Directive | <div>Pro-active compliance (Product out of EU RoHS legal scope)</div> |
| China Rohs Regulation | <div>China RoHS declaration</div> |
| Environmental Disclosure | <div>Product Environmental Profile</div> |
| Weee | <div>The product must be disposed on European Union markets following specific waste collection and never end up in rubbish bins</div> |
| Circularity Profile | <div>End of Life Information</div> |

Dimensions Drawings

Integrated Drive

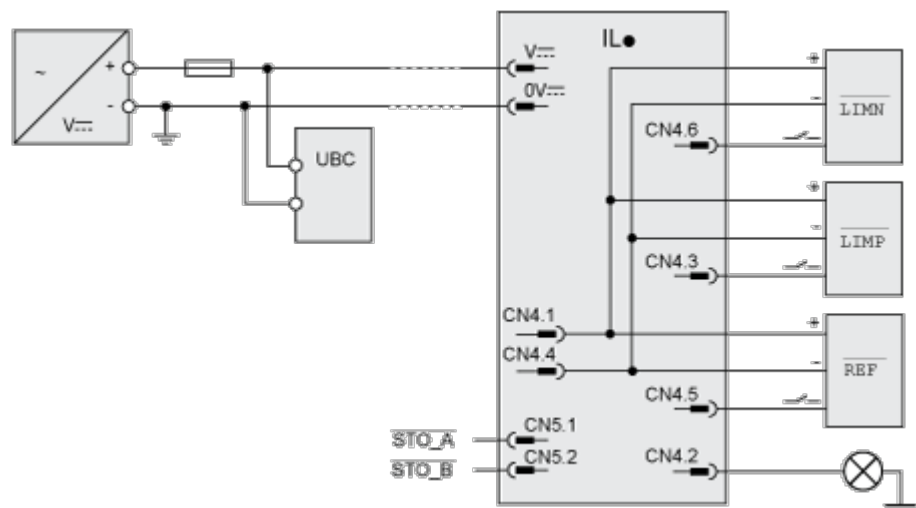
Dimensions



- 1 Accessories: I/O signal insert with industrial connectors
- 2 Option: industrial connectors
- 3 Earth (ground) terminal
- 4 Accessories: cable entries $\varnothing = 3 \dots 9 \text{ mm} / 0.12 \dots 0.35 \text{ in.}$
- L 101.9 mm / 4.01 in.
- D 6.35 mm / 0.25 in.

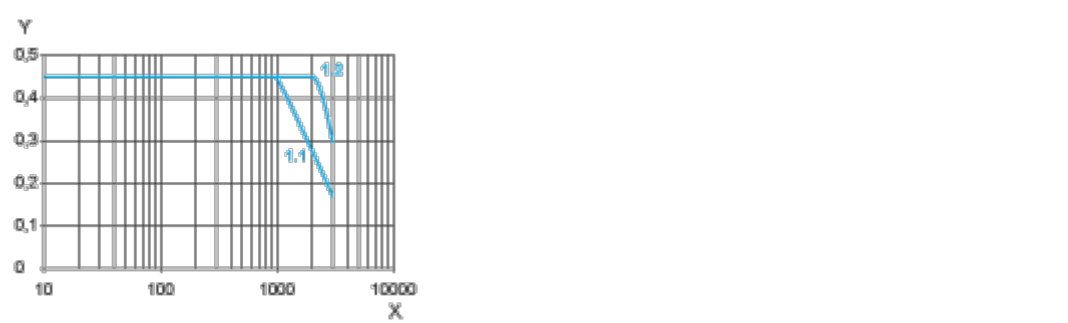
Connections and Schema

Connection Example with 4 I/O Signals



Performance Curves

Torque Characteristics



X Speed of rotation in rpm

Y Torque in Nm

1.1 Max. torque at 24 V

1.2 Max. torque at 48 V