

# Product datasheet

Specifications



## connection sub-base accessory - redundant input sub-base

Local distributor code:  
402702472 ABE7ACC11

EAN Code: 3389110864748

### Main

Accessory / Separate Part Designation	Redundant input sub-base
Accessory / Separate Part Destination	PLC
Accessory / Separate Part Category	Connection accessories
Accessory / Separate Part Type	Splitter sub-base
Range Of Product	Modicon ABE7
Sub-Base Type	Redundant input sub-base
Number Of Channels	16
Quantity Per Set	Set of 1

### Complementary

Channel Splitting	2 x 16
Net Weight	0.075 kg

### Packing Units

Unit Type Of Package 1	PCE
Number Of Units In Package 1	1
Package 1 Height	7.2 cm
Package 1 Width	8.0 cm
Package 1 Length	9.5 cm
Package 1 Weight	123.0 g
Unit Type Of Package 2	S03
Number Of Units In Package 2	24
Package 2 Height	30.0 cm
Package 2 Width	30.0 cm
Package 2 Length	40.0 cm
Package 2 Weight	3.429 kg

### Logistical informations

Country Of Origin	LV
-------------------	----

### Contractual warranty

Warranty	18 months
----------	-----------

Disclaimer: This documentation is not intended as a substitute for and is not to be used for determining suitability or reliability of these products for specific user applications

## Sustainability




**Green Premium™ label** is Schneider Electric's commitment to delivering products with best-in-class environmental performance. Green Premium promises compliance with the latest regulations, transparency on environmental impacts, as well as circular and low-CO<sub>2</sub> products.

**Guide to assessing product sustainability** is a white paper that clarifies global eco-label standards and how to interpret environmental declarations.

[Learn more about Green Premium >](#)

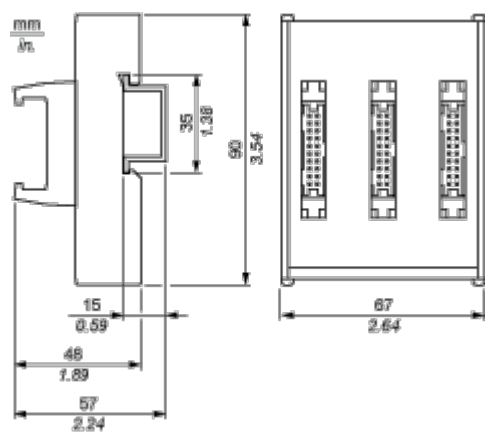
[Guide to assess a product's sustainability >](#)

## Well-being performance

 Reach Free Of Svhc	
 Mercury Free	
 Rohs Exemption Information	<a href="#">Yes</a>
<b>Reach Regulation</b>	<a href="#">REACH Declaration</a>
<b>Eu Rohs Directive</b>	Pro-active compliance (Product out of EU RoHS legal scope)
<b>China Rohs Regulation</b>	<a href="#">China RoHS declaration</a>
<b>Weee</b>	The product must be disposed on European Union markets following specific waste collection and never end up in rubbish bins

Dimensions Drawings

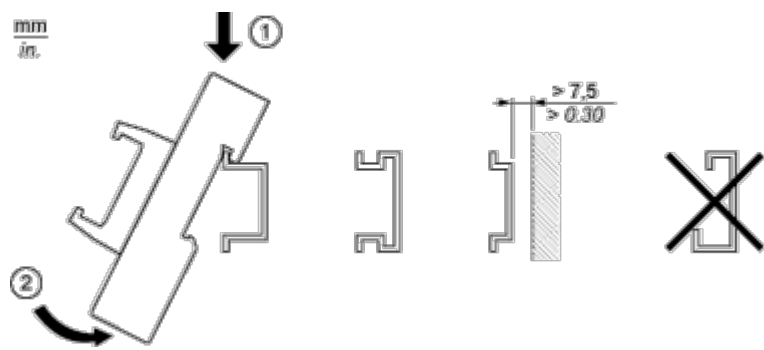
Dimensions



Mounting and Clearance

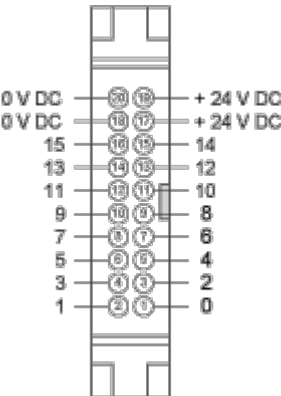
Mounting

---



Connections and Schema

HE10 16 Channels



Wiring Diagram

---

